








DOI: <https://dx.doi.org/10.21123/bsj.2022.5999>

## Molecular Characterization of Potential Crop Pathogens Associated with Weeds as Endophytes in Uniilorin Plantations, Nigeria

Lateef, A. A.<sup>1\*</sup>  Garuba, T.<sup>1</sup>  Abdulkareem, K. A.<sup>1</sup>  Olayinka, B. U.<sup>1</sup>   
Olahan, G. S.<sup>1</sup>  Adeyemi, S. B.<sup>1,2</sup>  AbdulRahaman, A. A.<sup>1</sup> 

<sup>1</sup> Department of Plant Biology, Faculty of Life Sciences, University of Ilorin, Nigeria.

<sup>2</sup> Uka Tarsadia University, Bardoli, India.

\* Corresponding author: [lateef.aa@unilorin.edu.ng](mailto:lateef.aa@unilorin.edu.ng)

E-mail addresses: [garuba.t@unilorin.edu.ng](mailto:garuba.t@unilorin.edu.ng), [abdulkareem.ak@unilorin.edu.ng](mailto:abdulkareem.ak@unilorin.edu.ng), [olayinka.bu@unilorin.edu.ng](mailto:olayinka.bu@unilorin.edu.ng), [olahan.gs@unilorin.edu.ng](mailto:olahan.gs@unilorin.edu.ng), [adeyemi.sb@unilorin.edu.ng](mailto:adeyemi.sb@unilorin.edu.ng), [abulrahamanaa@unilorin.edu.ng](mailto:abulrahamanaa@unilorin.edu.ng).

Received 8/1/2021, Accepted 14/11/2021, Published Online First 20/5/2022, Published 1/12/2022



This work is licensed under a [Creative Commons Attribution 4.0 International License](https://creativecommons.org/licenses/by/4.0/).

### Abstract:

Crop diseases are usually caused by inoculum of pathogens which might exist on alternate hosts or weeds as endophytes. These endophytes, cum pathogens, usually confer some beneficial attributes to these weeds or alternate hosts from protection against herbivores, disease resistance, stress tolerance to secondary metabolites production. This study was therefore carried out to isolate potential crop pathogens which exist as endophytes on weed species in the University of Ilorin plantations. Green asymptomatic leaves were collected from 10 weed species across the plantations, and processed for their endophytic fungi isolation. Isolates were purified into pure cultures and used for molecular identification using the internal transcribed spacer (ITS) region of the ribosomal DNA. Phylogenetic analysis of the fungal sequences using MEGA software revealed 9 fungal genera belonging to 13 species, with species in the genera *Curvularia*, *Epicoccum* and *Daldinia* occurring in more than one weed species, while other genera such as *Alternaria*, *Fusarium*, *Chaetomium*, *Macrophomina*, *Arthrinium* and *Phomopsis* occurred in just one weed species each. *Daldinia eschscholtzii* was isolated in this study as an endophyte from *Loudetia arundinacea* for the first time. This plant is very abundant in Nigeria and Africa where it is used majorly for thatching and feeding livestock. This also represents the first endophytic fungi from the genus *Loudetia*. Potential relationship between the occurrences of these fungi as endophytes and as pathogens are discussed. These discoveries represent the first large-scale molecular identification and several first reports of endophytes from these weed species. These results also represent the first records of some of these fungi in Nigeria.

**Keywords:** *Curvularia*, ITS (Internal Transcribed Spacer), *Loudetia arundinacea*, New records, Phylogenetic analysis.

### Introduction:

Just recently,<sup>1</sup> has raised provocative questions about the importance and potential role of schizotrophic endophytes in natural ecosystems. Schizotropism (split nutritional strategy) is the “opposite lifestyles” of fungal species (for example *Daldinia mutila*, *Sclerotium sclerotinum* and *Colletotrichum* spp.) on the endosymbiont–pathogen continuum in different host plants and there will likely be more microbes with these characteristics in nature. An endophyte’s life cycle includes both vertical transmission through host seeds and horizontal transmission through infective spread using fungal spores<sup>2</sup>. These endophytes may

alter competitive abilities of host individuals and improve host fitness under stress, but may also become pathogenic in other plants<sup>2</sup>.

Weeds are unwanted plants that grow along with cultivated plants<sup>3</sup>. The weeds grow aggressively in the field and most of them are characterized by possession of seeds with different dormancy periods, high adaptability to the growing environment, self-compatibility in terms of pollination and easy dispersal<sup>4</sup>. These weeds are very detrimental to agronomical operations as they compete with crops for nutrients, space, light and water, reduce crop yield, interfere with workability

of farm machinery, harbour pathogens (including endophytes cum pathogens) and release allelopathic substances. The overall effect of these unwanted plants is one of the factors that are not only responsible for economic losses in agricultural production<sup>5</sup> but also causes damage to the environment<sup>6</sup>.

Positive plant-microbe interaction is clearly manifested in the relationship between weeds and endophytic fungi. Endophytes make up part of the endobiome of plants including weeds<sup>7,8</sup> where they colonize their internal and living tissues without harming the host. They live mutualistically with the host. As the plant provide essential nutrients for the fungi, the fungi produce metabolites that confer chemically induced defense against external attack by animals, insects or other microbes, enhance its tolerance to environmental stress such as drought tolerance and heavy metal tolerance and positively influence plant growth and development<sup>9</sup>. Much attention has been shown to the control of weeds in the field and extensive work has been done in this regard. However, there is insufficient information available on the significance of weeds with their associated endophytic fungi which may even account for their therapeutic roles in traditional medicine and pharmaceutical industries.

Despite the fact that weeds are harmful and detrimental, they perform beneficial roles in the lives of man and livestock. Weeds provide vegetative cover to prevent both wind and water erosion, serve as food for man and livestock, help in recycling of nutrients in the soil, provide shelter for beneficial insects that partake in pollination, use as ornamental plants and biopesticides, and contain useful secondary metabolites that make them

indispensable in tradition medicine and pharmaceutical industries. Weeds in herbal medicine are taken as relaxants, painkillers, tonic antiseptics, for digestive purposes and for skin disorders. The leaf of *Ageratum conyzoides* is efficacious in wound healing and the juice from the leaf is used to cure skin diseases<sup>10</sup>. *Chromolaena odorata* leaf is used singly as cough remedy and in combination with guava leaf for the treatment of malaria<sup>11</sup>. However, medicinal properties of plants are majorly attributed to their phytochemicals and synergy of secondary metabolites being produced by endophytes<sup>12</sup>.

This work, therefore, aims to unveil the dominant endophytic fungi in selected weeds which may have multi-faceted significance as endophytes cum pathogens, or as resources for beneficial secondary metabolites production in cultivated plantations in the University of Ilorin.

## Materials and Methods:

### Sample collection

The sample collection sites were four plantations in the University of Ilorin campus, latitude 8, 29'N and longitude 40, 35'E, 320 m above sea level based on GPS readings Fig. 1. The vegetation is composed of Guinea Savanna Ecological Zone with rainfall which falls between May and September.

Green asymptomatic leaf samples were collected from plants regarded as intruding weeds in the plantations Tab. 1. Samples were collected into sterile polythene bags, labeled appropriately and transported to the laboratory for endophytic fungi isolation.

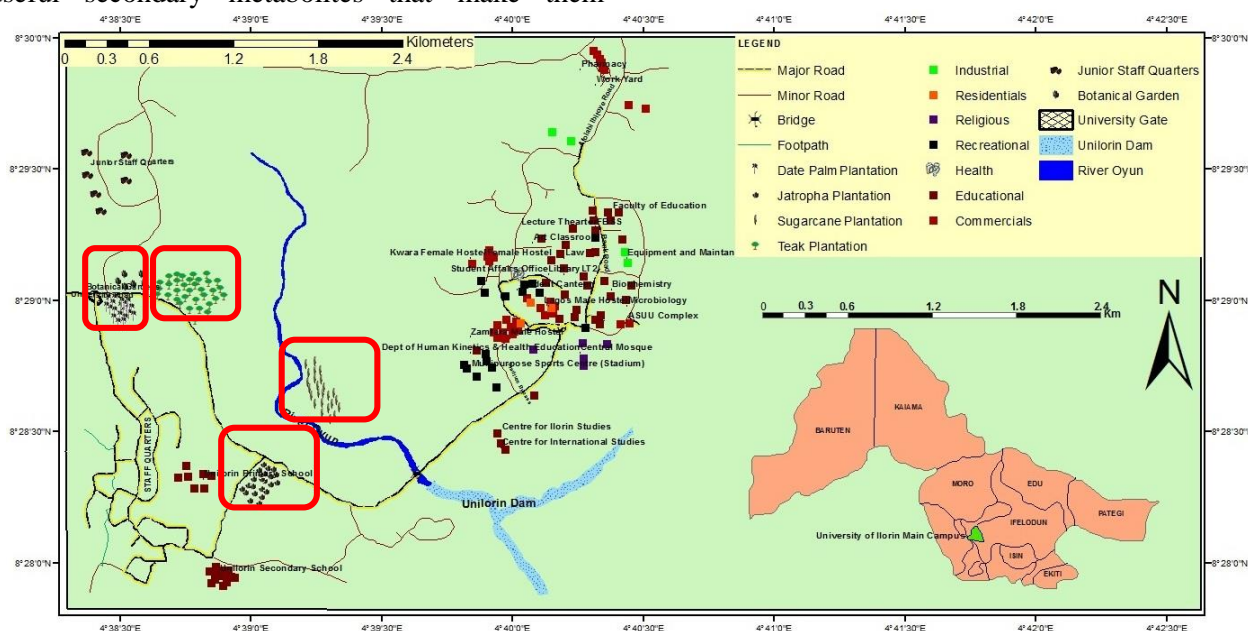


Figure 1. Map of University of Ilorin showing the plantations (in red rectangles) where samples were collected (Source: Unilorin, 2020).

### Isolation of endophytic fungi:

Endophytic fungi isolation was done following the method of <sup>13</sup>. Briefly, the leaves were cut into small segments of 2 cm<sup>2</sup>, rinsed in sterile distilled water followed by 30 sec in ethanol, 1 min in 10 % hypochlorite (bleach), 30 sec in ethanol and then five rinses in sterile distilled water. The leaves were allowed to dry out before plating on potato dextrose agar and subsequently obtaining pure cultures after 1-2 weeks.

### Genomic DNA Extraction, PCR (Polymerase Chain Reaction) amplification and Sequencing.

Mycelia from pure cultures were scrapped with sterile scapel into ZymoResearch DNA extraction kit (California, USA) tube and the extraction was done following the manufacturer's instruction. PCR amplification and sequencing were done at the Africa Genomic Inqabba Biotec in South Africa using the primer pair ITS 5 (5'-GGAAGTAAAAGTCGTAACAAGG-3') and ITS 4 (5'-TCCTCCGCTTATTGATATGC-3') <sup>14</sup>. The PCR mixture was prepared by adding 12.5 µl of Taq 2X PCR master mix, 1 µl of each primer (10 µM) (ITS 5 and ITS 4), 9.5 µl of double-sterilised distilled water (ddH<sub>2</sub>O) and 1 µl of the DNA template. For the control reaction, ddH<sub>2</sub>O was used as the template instead of the DNA. The PCR programme used was 2 mins at 94 °C, followed by 35 cycles at 94 °C for 1 min, 55 °C for 1 min, 72 °C for 1 min and final extension at 72°C for 10 mins. Sanger sequencing of the PCR products were carried out in an ABI PRISM sequencer at the Africa Genomic Inqabba Biotec in South Africa using the same primers. The DNA concentration, purity and PCR size were documented.

### Phylogenetic Analysis

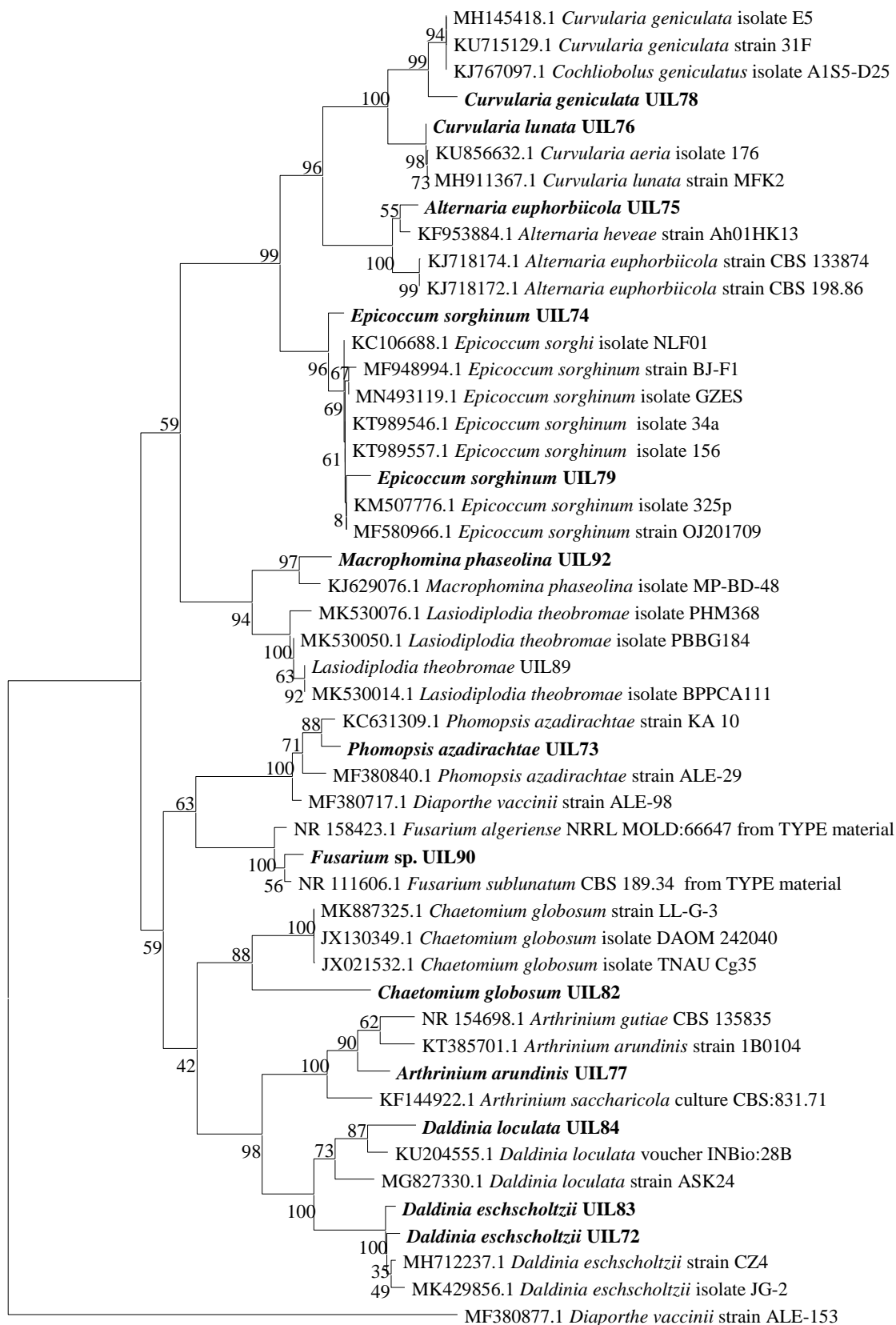
Forward and reverse sequences obtained from the sequencing were merged to obtain the consensus sequence using SeqTrace version 0.9.0 <sup>15</sup> and the consensus used for similarity search using BLAST-n on the GenBank website (<http://www.blast.ncbi.nlm.nih.gov>). Highly similar sequences from reputable laboratories were downloaded from GenBank for phylogenetic analysis. Aliview version 1.17-beta1 software <sup>16</sup> was used for the alignment and the phylogentic tree was constructed in MEGA using maximum likelihood.

The tree was rooted with *Diaporthe vaccinii* (MF380877). Sequences of the newly identified fungi were deposited in GenBank to obtain their accession numbers Tab. 1.. Stock cultures of the identified endophytes were stored in the Microbial collections of the Department of Plant Biology, University of Ilorin, Nigeria.

### Results:

#### Molecular identification and phylogenetics

In this study, dominant fungal endophytes were isolated using PDA from 10 weed plants. The isolated fungi were identified morphologically based on their culture characteristics which resulted in 13 fungal species from 9 genera. The DNA purity and concentration ranged from 1.7 – 1.8 and the PCR products ranged between 600 – 700 bps. Phylogenetic analysis of the isolated fungal DNA sequences using maximum likelihood in MEGA 7 showed the various relationships of the isolated fungal endophytes with their close relatives supported by high bootstrap values Fig. 2.



0.10

Figure 2. Phylogenetic tree shows (in bold) the molecular identification of the isolated endophytic fungi from this study. Maximum likelihood bootstrap values are shown on the tree branches.



Two isolates were identified as *Epicoccum sorghinum*, another two as *Daldinia eschscholtzii*, one each as *Alternaria euphorbiicola*, *Curvularia lunata*, *Curvularia geniculata*, *Macrophomina*

*phaseolina*, *Arthrinium arundinis*, *Daldinia loculata*, *Chaetomium globosum* and *Phomopsis azadirachtae* Fig. 3. However, only *Fusarium* sp. was unable to be identified to species level.

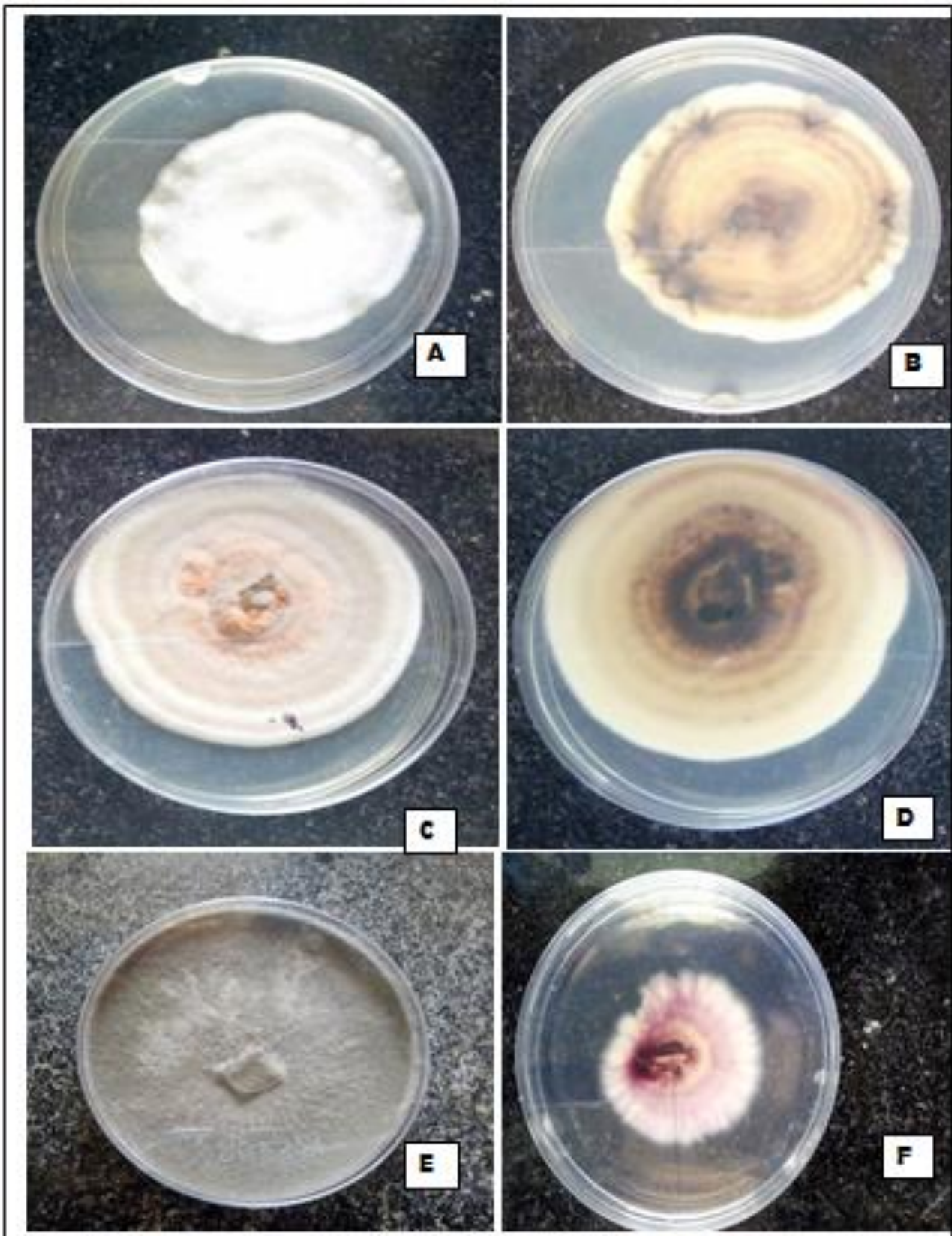


Figure 3. Morphology of the isolated fungal isolates A. Front view of *Curvularia geniculata* B. Reverse view of *Curvularia geniculata* C. Front view of *Epicoccum sorghinum* D. Reverse view of *Epicoccum sorghinum* E. *Daldinia eschscholtzii* F. *Fusarium* sp.

**Table 1. Endophytic fungi isolated from different weed species and their GenBank accession numbers.**

S/N	Weed species	Plantation	Fungi Isolated	GenBank Accession Number
1	<i>Loudetia arundinacea</i>	Jatropha	<i>Daldinia eschscholtzii</i>	MT875384
2	<i>Chromolaena odorata</i>	Sugarcane	<i>Epicoccum sorghinum</i>	MT875375
3	<i>Chromolaena odorata</i>	Sugarcane	<i>Alternaria euphorbiicola</i>	MT875377
4	<i>Chromolaena odorata</i>	Sugarcane	<i>Epicoccum sorghinum</i>	MT875376
5	<i>Bridellia ferruginea</i>	Sugarcane	<i>Chaetomium globosum</i>	MT875386
6	<i>Ageratum conyzoides</i>	Sugarcane	<i>Arthrimum arundinis</i>	MT875382
7	<i>Ageratum conyzoides</i>	Sugarcane	<i>Curvularia geniculata</i>	MT875379
8	<i>Boerhaavia diffusa</i>	Sugarcane	<i>Curvularia lunata</i>	MT875378
9	<i>Desmodium trifolium</i>	Sugarcane	<i>Daldinia eschscholtzii</i>	MT875385
10	<i>Etanda africana</i>	Date palm	<i>Daldinia loculata</i>	MT875383
11	<i>Gomphrena celosioides</i>	Jatropha	<i>Fusarium</i> sp.	MT875388
12	<i>Centrosema pubescens</i>	Date palm	<i>Macrophomina phaseolina</i>	MT875381
13	<i>Aspilia africana</i>	Date palm	<i>Phomopsis azadirachtae</i>	MT875387

### Diversity and occurrence (distribution) of the fungal isolates

Most of the weed plants used for the isolation occurred as perennials in plantations in the University of Ilorin.

Two <sup>2</sup> endophytes; *Daldinia eschscholtzii* and *Fusarium* sp. were isolated from weeds in Jatropha plantation, three <sup>3</sup>; *D. loculata*, *Macrophomina phaseolina* and *Phomopsis azadirachtae* isolated from weeds in Date palm plantation and seven <sup>7</sup>; *D. eschscholtzii*, *Epicoccum sorghinum*, *Alternaria euphorbiicola*, *Chaetomium globosum*, *Arthrimum arundinis*, *Curvularia lunata* and *C. geniculata* from weeds in Sugarcane plantation.

Two fungal genera *Curvularia* and *Daldinia* were each isolated as endophytes in two and three different weed species respectively while other genera occurred in just one plant species each Tab. 1. *C. lunata* and *C. geniculata* were isolated from *Boerhavia diffusa* and *Ageratum conyzoides* respectively; *Daldinia eschscholtzii* isolated from both *Loudetia arundinacea* and *Desmodium trifolium*; while *D. loculata* was isolated from *Etanda africana*.

Two plant species *Chromolaena odorata* and *Ageratum conyzoides* had two different fungal endophytes isolated from them each, while other plants had only one each. *Epicoccum sorghinum* and *Alternaria euphorbiicola* were isolated from *C. odorata*, while *C. geniculata* and *Arthrimum arundinis* were isolated from *A. conyzoides* respectively.

### Discussion:

The use of DNA sequences for identifying fungal endophytes has been a very useful and precise molecular tool in fungal biology with the ITS region being used as the primary barcode for identification of fungi <sup>17</sup>. This study therefore used the rDNA genes for the identification of isolates from the weeds species. It will be observed that all

fungal isolates in this study identified the species level except for *Fusarium* sp. This is due to the close relationships between *Fusarium* species in the ITS regions of their DNA thus resulting in low resolution of species at this level. <sup>18</sup> reported the use of TEF1 and  $\beta$ -tubulin regions for better identification of *Fusarium* to the species level. <sup>19</sup> noted that the GenBank database is sufficiently robust for endophytic fungi molecular identification. From the phylogenetic tree, it can be observed that the isolated endophytes were classified into two main clades, majorly with high bootstrap support. Each sub-clades was also well supported with high bootstrap value which indicates a well resolved phylogenetic tree, with different name in same sub-clade indicate synonyms

The isolation of endophytes from these weed species from the University of Ilorin plantations represent an effort to characterize the fungal species associated with these plants, thereby establishing a host-endophytes relationship blue-prints for these plants. The selected weed species were occurring dominantly in the plantations meaning that they can serve as a stable source for the isolation of the identified fungal endophytes and as well as a potential source of pathogens in the plantations by transiting the endosymbiont-pathogen continuum.

In Jatropha plantation where *D. eschscholtzii* and *Fusarium* sp. were isolated, <sup>20</sup> have reported *Fusarium* sp. causing die-back disease on Jatropha plants. However, *Daldinia* spp. has not been recorded in Jatropha plantations.

In Date palm plantation where *Phomopsis* was isolated from the weed *Aspilia africana*, *Daldinia* from *E. africana* and *Macrophomina* from *C. pubescens*, fruit rot and leaf spot has been reportedly caused by *Phomopsis* on date palm crops <sup>21</sup>. On the otherhand, *Daldinia* and *Macrophomina* has not been recorded as capable of causing diseases on Date palm.

From the endophytes isolated in Sugarcane plantation, two species of *Curvularia* was isolated from two different weeds. Other endophytes include *D. eschscholtzii*, *E. sorghinum*, *A. euphorbiicola*, *C. globosum* and *Arthrinium arundinis*.<sup>22</sup> have reported *Curvularia* spp. to be one of the prevalent pathogens of Sugarcane. Similarly, *Chaetomium* sp. has been reported as a pathogen of sugarcane in Cameroon<sup>23</sup>, *Alternaria* sp. in China<sup>24</sup> and *Arthrinium* sp. in China<sup>25</sup> respectively. On the other hand, *Daldinia* spp and *Epicoccum* spp. have not been reported as pathogens on Sugarcane, however, *Epicoccum* sp. has been reported to enhance the growth of Sugarcane in Brazil<sup>26</sup>.

Among the plant species used for isolation, *Chromolaena odorata* and *Ageratum conyzoides* both had more than one fungal endophytes associated with them. This signifies their capacity to host different fungal species which can be linked with their high dominance and rapid growth in the field, as endophytes have been known to increase plant growth and protection against biotic and abiotic stresses<sup>27</sup>. Also,<sup>28-30</sup> have also reported a similar trend of multiple endophytes associated with the leaves, stem and roots of *Myracrodruon urundeuva*, *Distylium chinense* and *Paullinia cupana* respectively.

The two fungal genera *Curvularia* and *Daldinia* that were isolated as endophytes in more than one weed species in this study have also been reported from several plant hosts. *Curvularia* species are able to colonize many host plants due to their ability to produce diverse secondary metabolites for greater niche exploitation<sup>31</sup>. *Curvularia geniculata* isolated from *C. odorata* has been reported to promote plant growth by the production of indole-acetic acid (IAA)<sup>32</sup> and this can be linked to the aggressive pattern of growth of *C. odorata* in the field. As well, *Daldinia eschscholtzii* have been reported to produce several metabolites with antimicrobial properties<sup>33</sup> thus, contributing to the better growth and medicinal uses of their host plants. These two fungi have also been reported occurring frequently and concurrently on sporulating rice in Thailand<sup>34</sup> thus further signifying their potentials as biologically active fungal species. *Alternaria* isolated from *C. odorata* also has biological activities against human tumor cells and amastigotes of *Leishmania amazonensis* parasite<sup>35</sup>.

*Daldinia eschscholtzii* isolated in this study as endophytes from *Loudetia arundinacea* and *Desmodium trifolium* for the first time. *L. arundinacea* is very abundant in Nigeria and Africa where it is used majorly for thatching and feeding livestock while *D. trifolium* is used for treating malaria, dysentery and for other medicinal

purposes<sup>36</sup>. This also represents the first endophytic fungi from the genus *Loudetia*.

<sup>37,38</sup> isolated endophytic fungi from *C. odorata* but *Epicoccum sorghinum* and *Alternaria euphorbiicola* were not reported. However, *E. sorghinum* and *A. euphorbiicola* were severally isolated in this study from *C. odorata* which can be influenced by site characteristics and possibly inherited from surrounding plants<sup>28,39</sup>. In addition, *E. sorghinum* has been reported as a pathogen in seeds of *Sorghum bicolor*<sup>40</sup>, as pathogen on Taro leaves<sup>41</sup>, and as endophyte in *Caesalpinia echinata*<sup>42</sup>, so as *A. euphorbiicola* was isolated as pathogen in *Euphorbia heterophylla*<sup>43</sup>, *E. prunicola*, *E. heterophylla* and *E. marginata*<sup>44</sup>.

These endophytes may become pathogenic or remain endophytic on their initial host or nearby plants depending on the circumstances such as the host physiological condition, the environmental conditions and nearby plants' condition. These factors could influence where an endophyte is placed on the endosymbiont-pathogen continuum<sup>2</sup>. Suboptimal environmental conditions may predispose a host plant resulting in disease and subsequent transfer of inoculum to nearby plants depending on the prevailing environmental condition<sup>45</sup>. Although, transition of endophytes on the endosymbiont-pathogen continuum have not been studied thoroughly, this study shows that these endophytes' transition can occur in the field.

No endophytic fungi have been earlier reported from *Bridelia ferruginea*. The isolation of *C. globosum* constitute the first endophyte from this plant. Similarly, *Chaetomium globosum* which was isolated from *Bridelia ferruginea* have been previously isolated as endophyte from *Gossypium hirsutum* and *Salvia miltiorrhiza*<sup>46</sup>. *Curvularia lunata* which was isolated from *Boerhavia diffusa* have however been isolated from *Cymbopogon caesius*<sup>47</sup>, *Lippia* sp.<sup>48</sup>, wild banana<sup>49</sup> and *Paepalanthus chiquitensis*<sup>50</sup> but not yet from *Boerhavia diffusa*, thus this represents the first record of this endophyte from *B. diffusa*.<sup>51</sup> isolated 15 fungal endophytes from *B. diffusa* in India which includes *Chaetomium* sp., *Colletotrichum* sp., *Pestalotiopsis* sp., *Phomopsis* sp., *Phyllosticta* sp., *Alternaria* sp., *Aspergillus* sp., *Curvularia* sp., *Fusarium* sp., and *Nigrospora* sp. but not *Curvularia lunata*. The recent identification of *C. lunata* in this study can therefore be attributed to the use of molecular techniques which is an improved method for fungal identification. *B. diffusa* leaves have been used in local medicines<sup>52,53</sup> but detailed study on its endophytic fungi has been lacking.

Similar studies to ours have been carried out by<sup>54</sup> on the molecular identification of

endophytic fungi from leaves of *Sapindus saponaria* using the ITS region which resulted in 13 isolates including the genera *Cochliobolus*, *Alternaria*, *Curvularia*, and *Phomopsis*. Furthermore, <sup>19</sup> isolated the genera *Phomopsis*, *Diaporthe*, *Dothideomycete*, and *Cordyceps* from leaves of the medicinal plant *Trichilia elegans*.

One of the most interesting features of these endophytic fungi is their immense diversity. Globally, endophytic fungal diversity is estimated at more than one million species, many of which inhabit different parts of individual plants <sup>55</sup> including the leaves, roots and stems.

The tropical regions of the world have the highest diversity of endophytic fungi as a result of the high plant diversity in those regions, therefore, exploration and exploitation of the endophytic fungi associated with different plant species as done in this study are important for the assessment of global fungal ecology and for their biotechnological potentials.

### Conclusion:

In conclusion, it is evident that the occurrences of 13 endophytic fungal species on 10 different host plants in the University of Ilorin commercial plantations might serve as a potential risk for fungal diseases of the crops grown in the plantations. This study further reveals several first records of endophytic fungi inhabiting some of the studied host plants. These discoveries will serve as a reference point for further exploration of molecular identification of fungi, actual pathogenicity of those fungi and exploitation of their biotechnological applications.

The occurrence of these fungal species as endophytes in these weed species is also being considered as an exploratory opportunity for drug discovery through their secondary metabolites.

### Acknowledgment

The authors acknowledge the support of the Tertiary Education Trust Fund (TetFund) for granting the award of 2016-2017 Institutional-Based Research Fund (IBRF). The research assistants engaged in this study are also appreciated.

### Authors' declaration:

- Conflicts of Interest: None.
- We hereby confirm that all the Figures and Tables in the manuscript are mine ours. Besides, the Figures and images, which are not mine ours, have been given the permission for re-publication attached with the manuscript.

- Ethical Clearance: The project was approved by the local ethical committee in University of Ilorin.

### Authors' contributions statement:

LAA, GT, AKA, OBU, OGS, ASB and AAA conceived and designed the research. All authors collected the samples, did the sample analyses and approved the final copy of the manuscript. LAA, GT and OGS wrote and edited the manuscript. LAA and GT did the sequence analyses. LAA did the phylogenetic analysis.

### References:

1. Tian B, Xie J, Fu Y, Cheng J, Li B, Chen T, et al. A cosmopolitan fungal pathogen of dicots adopts an endophytic lifestyle on cereal crops and protects them from major fungal diseases. *Isme J.* 2020;14:3120–35.
2. A´lvarez-Loayza P, White JF Jr, Torres MS, Balslev H, Kristiansen T, Svenning J-C, et al. Light Converts Endosymbiotic Fungus to Pathogen, Influencing Seedling Survival and Niche-Space Filling of a Common Tropical Tree, *Iriarteia deltoidea*. *PLoS ONE.* 2011;6(1):e16386.
3. Ekwealor KU, Echereme CB, Ofobeze TN, Okereke CN. Economic Importance of Weeds: A Review. *Asian Plant Res J.* 2019;3(2):1–11.
4. Rana SS, Rana MC. Principles and Practices of Weed Management. Department of Agronomy, College of Agriculture. Palampur, India: CSK Himachal Pradesh Krishi Vishvavidyalaya; 2016; 1st<sup>ed</sup>, Chap 1, 138 p.
5. Sintayehu A. Weed flora survey in field crops of Northwestern Ethiopia. *Afr J Agric Res.* 2019;14(16):749–58.
6. Ramesh K, Matloob A, Aslam F, Florentine SK, Chauhan BS. Weeds in a Changing Climate: Vulnerabilities, Consequences, and Implications for Future Weed Management. *Front Plant Sci [Internet].* 2017 [cited 2021 Jan 25];8. Available from: <https://www.frontiersin.org/articles/10.3389/fpls.2017.00095/full>
7. Suryanarayanan TS. Endophytes and weed management: a commentary. *Plant Physiol Rep.* 2019;24:576–9.
8. White JF, Kingsley KL, Zhang Q, Verma R, Obi N, Dvinskikh S, et al. Review: Endophytic microbes and their potential applications in crop management. *Pest Manag Sci.* 2019;75(10):2558–65.
9. Rolli E, Marasco R, Vigani G, Ettoumi B, Mapelli F, Deangelis ML, et al. Improved plant resistance to drought is promoted by the root-associated microbiome as a water stress-dependent trait. *Environ Microbiol.* 2015;17:316–31.
10. Ogbalu OK, Williams JO. The Use of *Ageratum Conyzoides* L. [Asteraceae] as a therapeutic measure in the treatment of breast myiasis sores in rural women and associated bacteria. *IOSR J Pharm Biol Sci.* 2014;9(6):44–50.



11. Vaisakh MN, Pandey A. The invasive weed with healing properties: a review on *Chromolaena odorata*. *Int J Pharm Sci Res*. 2012;3(1):80–3.
12. Gómez OC, Luiz JHH. Endophytic fungi isolated from medicinal plants: future prospects of bioactive natural products from *Tabebuia/Handroanthus* endophytes. *Appl Microbiol Biotechnol*. 2018;102(21):9105–19.
13. Lateef AA, Muid S, Bolhassan MH, Wan Zamir M. Microfungal diversity on leaves of *Eusideroxylon zwageri*, a threatened plant species in Sarawak, Northern Borneo. *Biodiversitas*. 2015;16(2):264–8.
14. White TJ, Bruns T, Lee S, Taylor J. Amplification and Direct Sequencing of fungal Ribosomal RNA genes for Phylogenetics. In: *PCR Protocols: A Guide to methods and Applications*. New York, USA: Academic Press; 1990. 1st ed, Chap 38, p. 315–22.
15. Stucky BJ. SeqTrace: A Graphical Tool for Rapidly Processing DNA Sequencing Chromatograms. *J Biomol Technol*. 2012; 23:90–3.
16. Larsson A. AliView: A fast and lightweight alignment viewer and editor for large datasets. *Bioinforma*. 2014;30(22):3276–8.
17. Schoch CL, Seifert KA, Huhndorf S, Robert V, Spouge JL, Levesque CA, et al. Nuclear ribosomal internal transcribed spacer (ITS) region as a universal DNA barcode marker for Fungi. *Proc Natl Acad Sci*. 2012;109(16):6241–6.
18. Chala A, Degefu T, Brurberg MB. Phylogenetically Diverse *Fusarium* Species Associated with Sorghum (*Sorghum Bicolor* L. Moench) and Finger Millet (*Eleusine Coracana* L. Gärten) Grains from Ethiopia. *Divers*. 2019; 11(6):93.
19. Rhoden SA, Garcia A, Rubin Filho CJ, Azevedo JL, Pamphile JA. Phylogenetic diversity of endophytic leaf fungus isolates from the medicinal tree *Trichilia elegans* (Meliaceae). *Genet Mol Res GMR*. 2012 Aug 16;11(3):2513–22.
20. Nasiru AM, Banwo OO, Isah AD, Zarafi AB. Identification and pathogenicity of *Fusarium* and *Phomopsis* foliar diseases of *Jatropha curcas* L. in North-west States of Nigeria. *World Res J Agric Sci*. 2015;2(2):022–7.
21. Mustapha EB, Faleiro JR. Date palm Pests and Diseases Integrated Management Guide. Beirut, Lebanon: International Center for Agricultural Research in the Dry Areas (ICAR); 2018. 1<sup>st</sup> ed, Chap 1, 230 p.
22. Raza M, Zhang ZF, Hyde KD, Diao YZ, Cai L. Culturable plant pathogenic fungi associated with sugarcane in southern China. *Fungal Divers*. 2019;99:1–104.
23. Bechem EET, Mbella CEJ. A Survey of Symptoms of Fungal Disease in Sugarcane (*Saccharum officinarum* L.) in Buea, in the South West Region of Cameroon. *Annu Res Rev Biol*. 2019;31(3):1–12.
24. Hilton A, Zhang H, Yu W, Shim W-B. Identification and Characterization of Pathogenic and Endophytic Fungal Species Associated with Pokkah Boeng Disease of Sugarcane. *Plant Pathol J*. 2017/06/01 ed. 2017;33(3):238–48.
25. Ming L. Moldy sugarcane poisoning--a case report with a brief review. *J Toxicol Clin Toxicol*. 1995;33(4):363–7.
26. Favaro Lc, Sebastianes Fl, Araujo W. *Epicoccum nigrum* P16, a Sugarcane Endophyte, Produces Antifungal Compounds and Induces Root Growth. *PLoS One*. 2012;7(6):e36826.
27. Hardoim PR, van Overbeek LS, Berg G, Pirttilä Am, Compant S, Campisano A, et al. The Hidden World Within Plants: Ecological and Evolutionary Considerations for Defining Functioning of Microbial Endophytes. *Microbiol Mol Biol Rev*. 2015 [cited 2020 Jul 9];79(3). Available from: <https://pubmed.ncbi.nlm.nih.gov/26136581/>
28. Duan X, Xu F, Qin D, Gao T, Shen W, Zuo S, et al. Diversity and bioactivities of fungal endophytes from *Distylium chinense*, a rare waterlogging tolerant plant endemic to the Three Gorges Reservoir. *BMC Microbiol*. 2019;19(1):278.
29. Pádua APSL de, Freire KTL de S, Oliveira TGL de, Silva LF da, Araújo-Magalhães GR, Agamez-Montalvo GS, et al. Fungal endophyte diversity in the leaves of the medicinal plant *Myracrodruon urundeuva* in a Brazilian dry tropical forest and their capacity to produce L-asparaginase. *Acta Bot Bras*. 2019;33(1):39–49.
30. Silva F de A, Liotti RG, Boleti AP de A, Reis É de M, Passos MBS, Dos Santos EL, et al. Diversity of cultivable fungal endophytes in *Paullinia cupana* (Mart.) Ducke and bioactivity of their secondary metabolites. *PloS One*. 2018;13(4):e0195874.
31. Pusztahelyi T, Holb IJ, Pócsi I. Secondary metabolites in fungus-plant interactions. *Front Plant Sci* [Internet]. 2015 [cited 2020 Jul 9];6. Available from: <https://www.frontiersin.org/articles/10.3389/fpls.2015.00573/full>
32. Priyadharsini P, Muthukumar T. The root endophytic fungus *Curvularia geniculata* from *Parthenium hysterophorus* roots improves plant growth through phosphate solubilization and phytohormone production. *Fungal Ecol*. 2017;27:69–77.
33. Liu HX, Tan HB, Li SN, Chen YC, Li HH, Zhang WM. Two New Metabolites From *Daldinia eschscholtzii*, an Endophytic Fungus Derived From *Pogostemon Cablin*. *J Asian Nat Prod Res* [Internet]. 2019 [cited 2020 Jul 9];21(2). Available from: <https://pubmed.ncbi.nlm.nih.gov/29063789/>
34. Su-Han N, Songkumarn P, Nuankaew S, Boonyuen N, Piasai O. Diversity of sporulating rice endophytic fungi associated with Thai rice cultivars (*Oryza sativa* L.) cultivated in Suphanburi and Chainat Provinces, Thailand. *Curr Res Environ Appl Mycol*. 2019;9(1):1–14.
35. Rosa LH, Gonçalves VN, Caligiorne RB, Alves TMA, Rabello A, Sales PA, et al. Leishmanicidal, trypanocidal, and cytotoxic activities of endophytic fungi associated with bioactive plants in Brazil. *Braz J Microbiol*. 2010;41:420–30.
36. Singh SM, Neha PB. A review on *Shalparni* (*Desmodium gangeticum* DC.) and *Desmodium* species (*Desmodium triflorum* DC. & *Desmodium*

- laxiflorum DC.) - Ethnomedicinal perspectives. *J Med Plants Stud.* 2015;3(4):34–43.
37. Crous PW, Carnegie AJ, Wingfield MJ, Sharma R, Mughini G, Noordeloos ME, et al. Fungal planet description sheets: 868-950. *Persoonia Mol Phylogeny Evol Fungi.* 2019 Jun;42:291–473.
38. Mapook A, Hyde KD, McKenzie EHC, Jones EBG, Bhat DJ, Jeewon R, et al. Taxonomic and phylogenetic contributions to fungi associated with the invasive weed *Chromolaena odorata* (Siam weed). *Fungal Divers.* 2020 Mar 1;101(1):1–175.
39. Navaud O, Barbacci A, Taylor A, Clarkson JP, Raffaele S. Shifts in diversification rates and host jump frequencies shaped the diversity of host range among Sclerotiniaceae fungal plant pathogens. *Mol Ecol.* 2018/03/23 ed. 2018;27(5):1309–23.
40. Stokholm MS, Wulff EG, Zida EP, Thio IG, Néya JB, Soalla RW, et al. DNA barcoding and isolation of vertically transmitted ascomycetes in sorghum from Burkina Faso: *Epicoccum sorghinum* is dominant in seedlings and appears as a common root pathogen. *Microbiol Res.* 2016;191:38–50.
41. Liu PQ, Wei MY, Zhu L, Wang RB, Li BJ, Weng QY, et al. First Report of Leaf Spot on Taro Caused by *Epicoccum sorghinum* in China. *Plant Dis.* 2018;102(3):682.
42. Campos FF, Sales Junior PA, Romanha AJ, Araújo MSS, Siqueira EP, Resende JM, et al. Bioactive endophytic fungi isolated from *Caesalpinia echinata* Lam. (Brazil wood) and identification of beauvericin as a trypanocidal metabolite from *Fusarium* sp. *Mem Inst Oswaldo Cruz.* 2015;110(1):65–74.
43. Varejão EVV, Demuner AJ, Barbosa LCA, Barreto RW, Vieira BS. Phytotoxicity of *Alternaria euphorbiicola* culture filtrates in *Euphorbia heterophylla* leaves. *Planta Daninha.* 2013;31(1):1–9.
44. Woudenberg JHC, Groenewald JZ, Binder M, Crous PW. *Alternaria* redefined. *Stud Mycol.* 2013 Jun 30;75(1):171–212.
45. Kuldau GA, Yates IE. Evidence for *Fusarium* endophytes in cultivated and wild plants. In: Bacon C W, White J F, editors *Microbial Endophytes.* New York and Basel: Marcel Dekker, Inc.; 2000. 1st ed, Chap 5, p. 85–120.
46. Zhai X, Luo D, Li X, Han T, Jia M, Kong Z, et al. Endophyte *Chaetomium globosum* D38 Promotes Bioactive Constituents Accumulation and Root Production in *Salvia miltiorrhiza*. *Front Microbiol [Internet].* 2018 Jan 22 [cited 2020 Aug 26];8. Available from: <https://www.ncbi.nlm.nih.gov/pmc/articles/PMC5786870/>
47. Avinash KS, Ashwini HS, Babu HNR, Krishnamurthy YL. Antimicrobial Potential of Crude Extract of *Curvularia lunata*, an Endophytic Fungi Isolated from *Cymbopogon caesius*. *J Mycol.* 2015;2015:4.
48. Ferreira TP de S, Santos GR dos, Soares IM, Ascencio SD, Alvim T da C, Siqueira C de A, et al. Secondary metabolites from endophytic fungus from *Lippia sidoides* Cham. *J Med Plants Res.* 2017;11(16):296–306.
49. Zakaria L, Jamil MIM, Anuar ISM. Molecular Characterisation of Endophytic Fungi from Roots of Wild Banana (*Musa acuminata*). *Trop Life Sci Res.* 2016;27(1):153–62.
50. Hilario F, Polinário G, de Amorim MR, de Sousa Batista V, do Nascimento Júnior NM, Araújo AR, et al. Spirocyclic lactams and curvulinic acid derivatives from the endophytic fungus *Curvularia lunata* and their antibacterial and antifungal activities. *Fitoterapia.* 2020 Mar;141:104466.
51. Sahani K, Geetha S, Hemalatha KPJ. Diversity and Cold Adaption of Endophytic Fungi from *Boerhavia Diffusa* L. from Eastern Ghat of India. *Int J Innov Sci Res Technol.* 2008;3(2).
52. Kaur H. *Boerhaavia diffusa*: Bioactive Compounds and Pharmacological Activities. *Biomed Pharmacol J [Internet].* 2019 [cited 2020 Aug 26];12(4). Available from: <https://biomedpharmajournal.org/vol12no4/boerhaavia-diffusa-bioactive-compounds-and-pharmacological-activities/>
53. Nalamolu RK, Boini KM, Nammi S. Effect of chronic administration of *Boerhaavia diffusa* Linn. leaf extract on experimental diabetes in rats. *Trop J Pharm Res.* 2007 Jul 27;3(1):305–9.
54. García A, Rhoden SA, Rubin Filho CJ, Nakamura CV, Pamphile JA. Diversity of foliar endophytic fungi from the medicinal plant *Sapindus saponaria* L. and their localization by scanning electron microscopy. *Biol Res.* 2012;45(2):139–48.
55. Arnold E A. Endophytic Fungi: Hidden Components of Tropical Community Ecology. In: *Tropical Forest Community Ecology* (Schnitzer S A, Carson W P, and Smithsonian Tropical Research Institute eds). Chichester; Malden, MA: Wiley-Blackwell Pub; 2008. 2<sup>nd</sup> ed, Chap 15, p. 254-271.

## التوصيف الجزيئي لمسببات امراض المحاصيل المحتملة المرتبط بالأدغال كعائل نباتي داخلي في مزارع جامعة إيلورين، نيجيريا

اديمي بي اس<sup>1,2</sup>

اولهان جي اس<sup>1</sup>

عبد الكريم اولينيك<sup>1</sup>

لطيف كاروبا<sup>1</sup>

عبد الرحمن أي أي<sup>1</sup>

<sup>1</sup>قسم بيولوجيا النبات، كلية علوم الحياة، جامعة إيلورين، نيجيريا  
<sup>2</sup>جامعة أوكا تارساديا، باردولي، الهند

### الخلاصة:

عادة ما تحدث أمراض المحاصيل عن طريق لقاح من مسببات الأمراض التي قد توجد على عوائل بديلة أو حشائش مثل عائل نباتي داخلي. عادة ما تمنح هذه العوائل النباتية الداخلية ، مسببات الأمراض ، بعض السمات المفيدة لهذه الأعشاب أو المضيفات البديلة من الحماية ضد العواشب ، ومقاومة الأمراض ، وتحمل الإجهاد لإنتاج مركبات الايض الثانوية. لذلك أجريت هذه الدراسة لعزل مسببات الأمراض المحتملة التي توجد كعوائل نباتية داخلية في أنواع الادغال في مزارع جامعة إيلورين. جمعت الأوراق الخضراء عديمة الأعراض من 10 أنواع من الادغال عبر المزارع ، وتم معالجتها لعزل الفطريات من العائل النباتي الداخلي. تم تنقية العزلات إلى مستنبتات نقية واستخدمت في التعريف الجزيئي باستخدام منطقة المبادئ المنسوخة الداخلية (ITS) للحمض النووي الريبوسومي. كشف التحليل الوراثي للتسلسل الفطري باستخدام برنامج MEGA عن 9 أجناس فطرية تنتمي إلى 13 نوعاً ، مع وجود أنواع في الأجناس *Epicoccum* و *Curvularia* و *Daldinia* في أكثر من نوع واحد من الادغال ، بينما توجد أجناس أخرى مثل *Alternaria* و *Fusarium* و *Chaetomium* و *Macrophomina* و *Arthrinium* و *Phomopsis* في نوع واحد فقط من الادغال لكل منهما. تم عزل *Daldinia eschscholtzii* في هذه الدراسة باعتباره عائل نباتي داخلي من *Loudetia arundinacea* لأول مرة. هذا النبات متوفر بكثرة في نيجيريا وإفريقيا حيث يتم استخدامه بشكل رئيسي بتغطية السقوف بالقش وتغذية المواشي. يمثل هذا أيضاً أول فطريات في عائل نباتي داخلي من جنس *Loudetia*. تمت مناقشة العلاقة المحتملة بين حدوث هذه الفطريات باعتبارها عائل نباتي داخلي ومسببات الأمراض. تمثل هذه الاكتشافات أول تحديد جزيئي واسع النطاق والعديد من التقارير الأولية عن عوائل نباتات داخلية من هذه الأنواع من الادغال. تمثل هذه النتائج أيضاً التسجيل الأولي لبعض هذه الفطريات في نيجيريا.

الكلمات المفتاحية: *Curvularia*، ITS ، فاصل النسخ الداخلي، *Loudetia arundinacea* ، تسجيل جديد ، الشجرة التطورية.