

دراسة مرضية لبكتريا *Campylobacter jejuni* في موديل الفأر المختبري

م.م. الاء فاهم عباس د. أزهار عمران لطيف

كلية العلوم/ جامعة القادسية كلية العلوم / جامعة بابل

Table- 1: *C. jejuni* recovery rates.

Diarrhea type	No.	No. of <i>C. jejuni</i> isolates	%
Watery diarrhea	250	6	2.4%
Bloody diarrhea	90	2	2.2%
Total	340	8	2.35%

Table- 1: Biochemical and physiological tests of *C. jejuni* isolates.

Test	Result
Oxidase	+
Catalase	+
Urease	-
Nitrare reduction	+
Hippurate hydrolysis	+
Reaction on Triple sugar iron	-
Growth in 1.5% NaCl	-
Growth in 3.5% NaCl	-
Growth at 25 °C	-
Growth at 37 °C	+
Growth at 42 °C	+
Growth on MacConkey agar	-
Motility	+

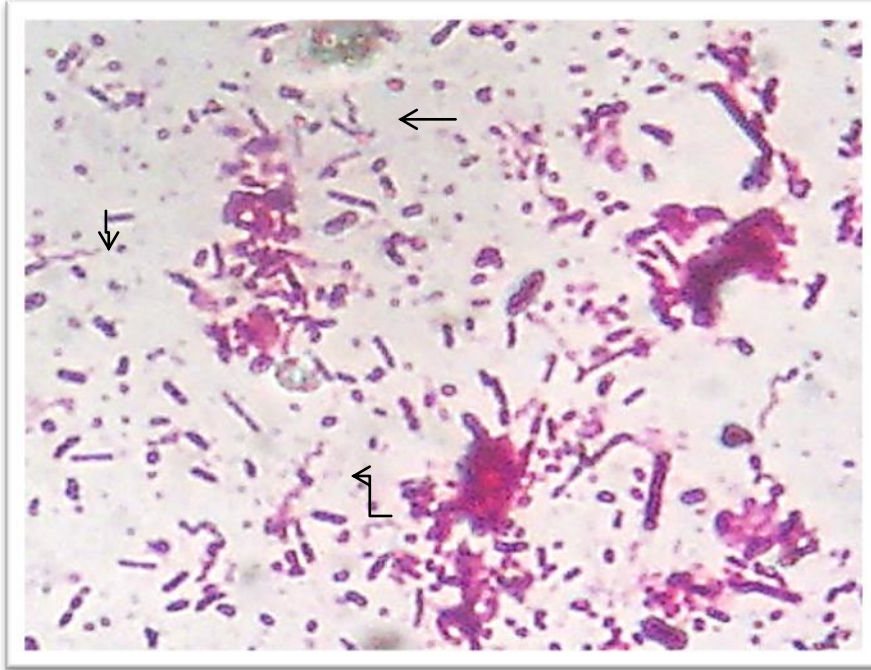


Fig (1): Stool specimen of a patient infected with Campylobacter, showing the spiral shapes of Campylobacter cells (arrow), stained by 1% carbol fuchsin (1000 X).

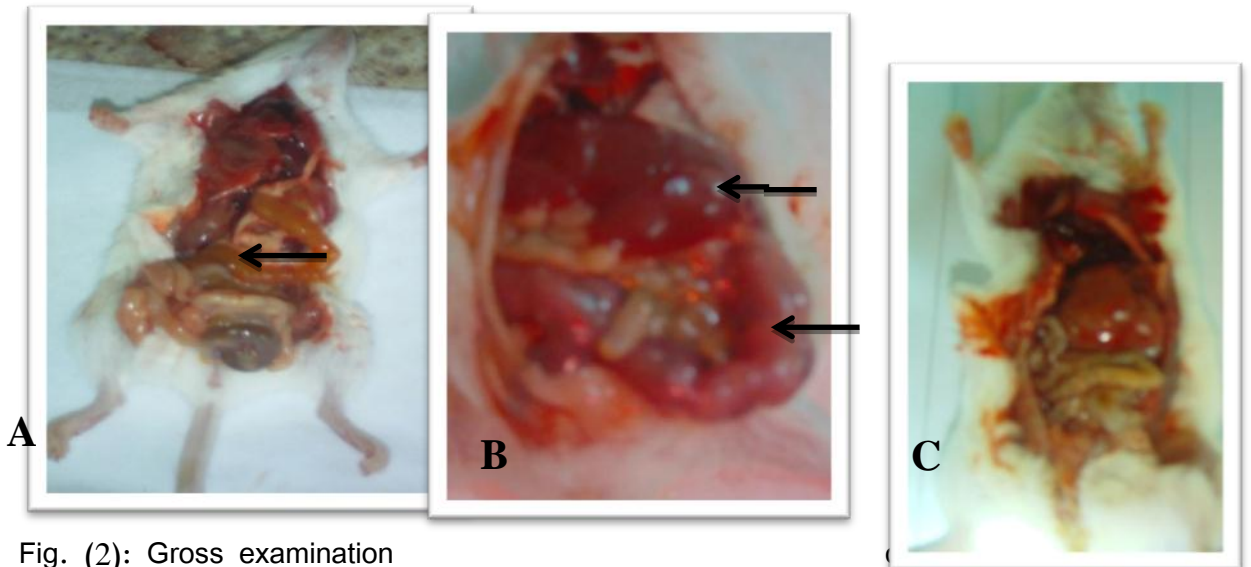


Fig. (2): Gross examination

A- In a mouse third day after intraperitoneal injection of 10^8 cell/ml showing an accumulation of fluid in small intestine.

B- In a mouse seventh day after intraperitoneal injection of 10^8 cell/ml showing enlargement of the liver.

C- In control mouse after intraperitoneal injection of phosphate buffer saline.



Fig (3-1): Microscopical view of the terminal part of the small intestine of a mouse third day after intraperitoneal injection of 10^8 cell/ml showing mucosal sloughing and desquamation and destruction of villi (X50).



Fig (3-2): Microscopical view of the terminal part of the small intestine showing infiltration of inflammatory cells (arrow) within the lamina propria of the villi. (X200)

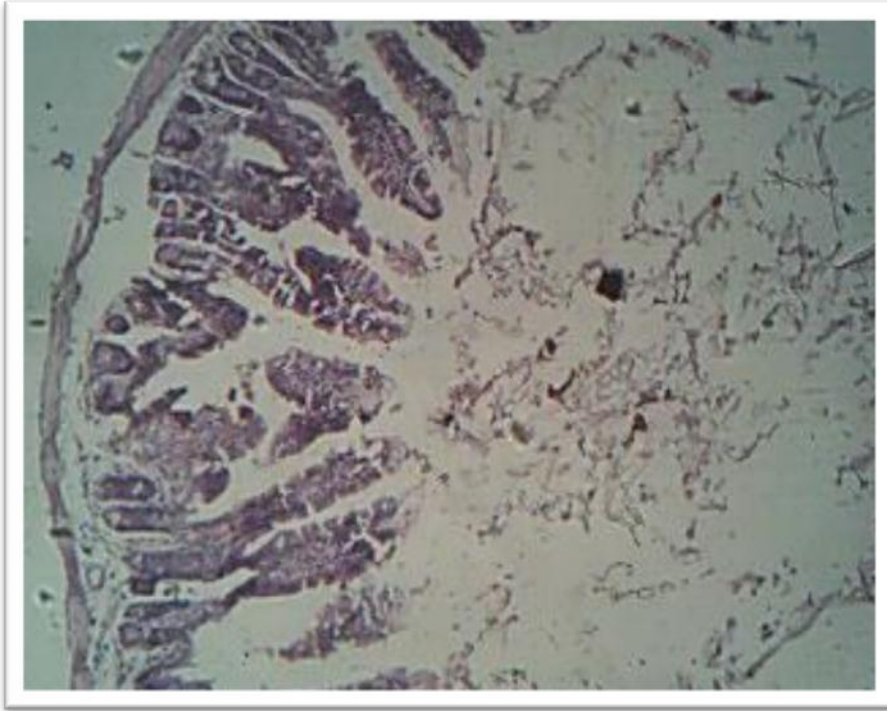


Fig (3-3): Microscopical view of the terminal part of the small intestine of a mouse seventh day after intraperitoneal injection of 10^8 cell/ml showing villi atrophy (X50).



Fig (3-4): Microscopical view of the small intestine of a control mouse showing normal histological appearance. (X100)

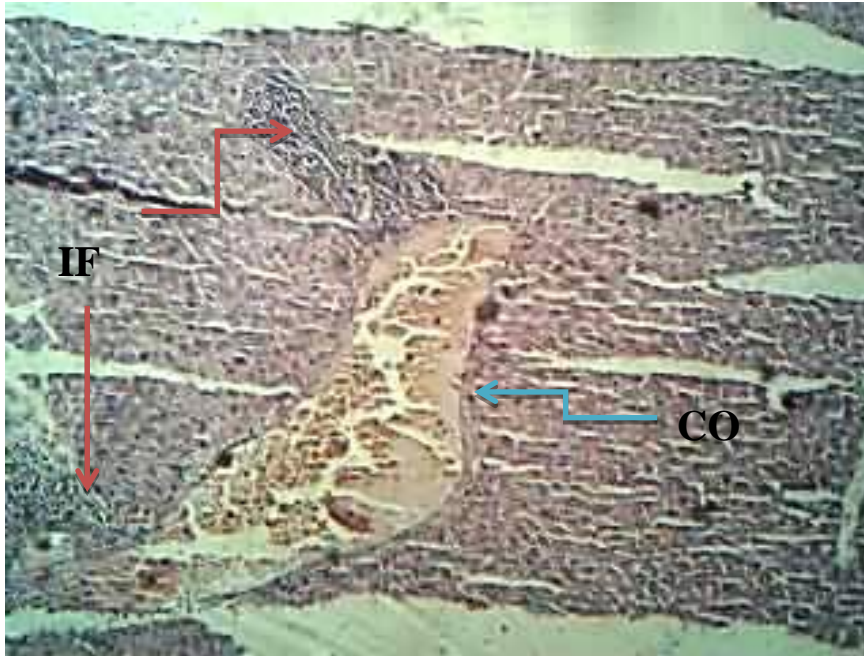


Fig (4-1): Microscopical view of the liver of a mouse third day after intraperitoneal injection of 10^8 cell/ml showing IF: multiple foci of inflammatory cell infiltration and CO: congestion of central vein (X50).

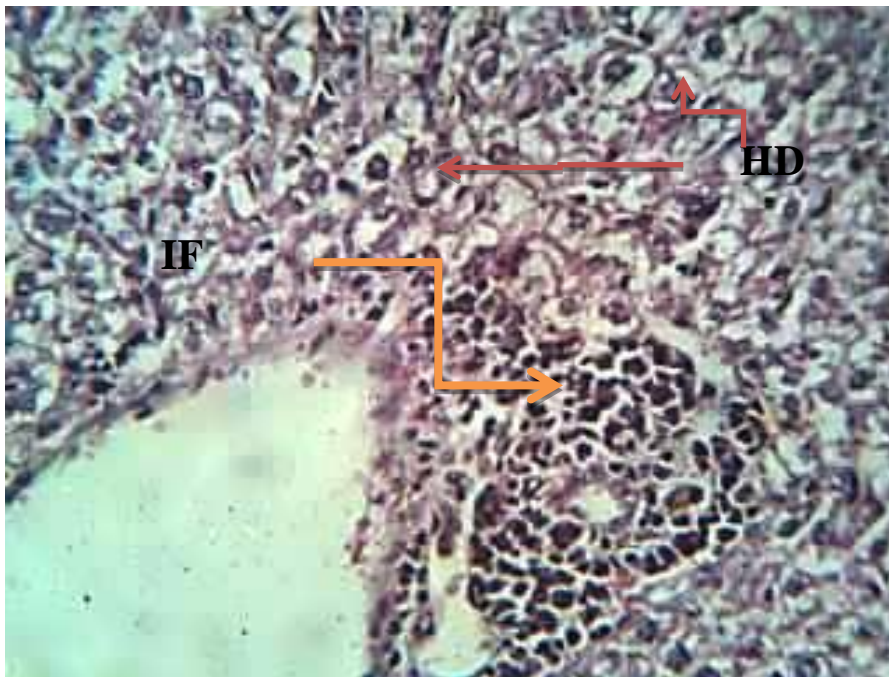


Fig (4-2): Microscopical view of the liver at seventh day after intraperitoneal injection of 10^8 cell/ml showing HD: hydropic degeneration and foci of inflammatory cell infiltration (X200).

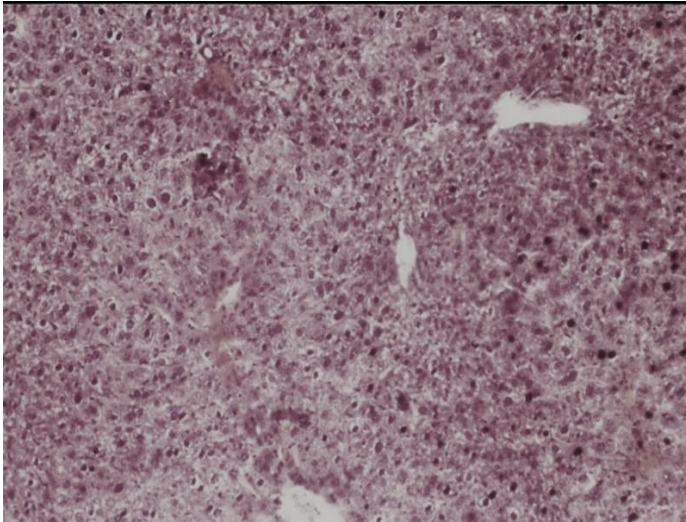
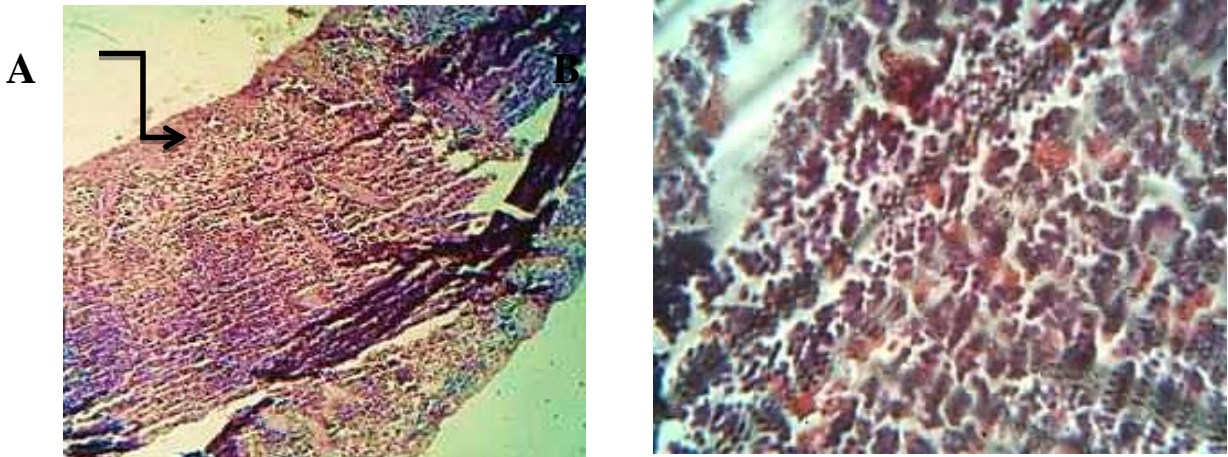


Fig (4-3): Microscopical view of the liver of control mouse.



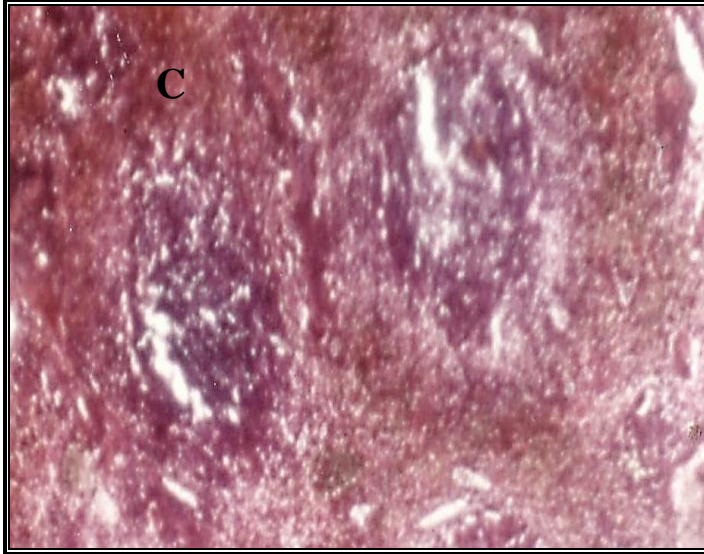


Fig. (5): Microscopical view of the spleen of a mouse injected with 10^8 cell/ml showing A- Red pulp hyperplasia B- hemorrhage C- control.